



Red House Designs Modern Modular Home Plans

Red House Design LLC thinks “outside the box” with a collection of contemporary modern modular floor plans for Epoch Homes’ modular building system.

PEMBROKE, NH. May 13, 2011 – Epoch Homes (www.EpochHomes.com) is no stranger to cutting edge modular home plans, but when Red House Design LLC presented their collection of contemporary modular designs, Epoch CEO John Ela was truly excited. “At Epoch Homes, we have seen talented architects like Bruce Moore of Red House increasingly turn to the modular building system because of the high level of quality, flexibility in design, and especially the unequaled standard of green and sustainable construction we are able to achieve in a controlled factory environment” said Ela. “The homes Bruce brought to us are really unique.” The four designs that will launch the Red House collection are the Box House, the Slide House, the Spin House, and the Stack House.

Architect Bruce Moore of Red House defines these homes as “spacious yet compact open-living plans, expansive use of glass, refined finish selections, careful attention to detail, and a blend of sustainable materials, energy efficiency and environmental responsibility.” He adds that “every technical detail yields efficiencies in line production, material resources, transportation, set and finishing which will maximize the modular industry’s potential to build these homes to the highest quality at the most effective price.”

Moore sees the modern designs appealing to an emerging market of non-traditional home buyers seeking high value along with a healthy and sustainable lifestyle.

About Epoch Homes

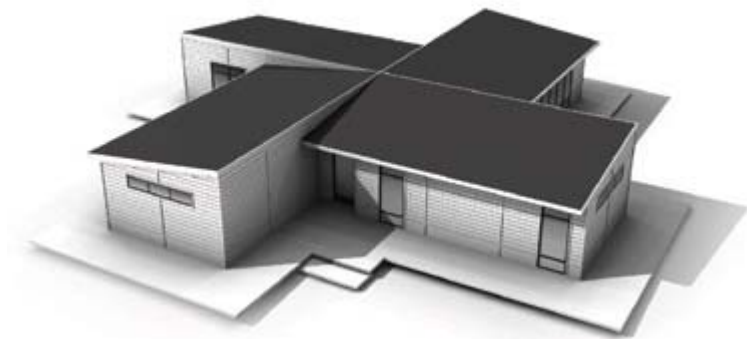
In 2011, Epoch Homes celebrates its 29th year of innovation, providing quality custom sustainable modular homes to discerning Builders and home owners. Epoch is the first modular home manufacturer in the nation to be certified under the Modular Green Approved program offered by the NAHB Research Center, and one of the first to offer homes designed to meet both the LEED for Homes Platinum level, and the National Green Building Standard. Epoch sells through a growing network of quality-oriented custom home builders across New England, NY and NJ.

About Red House Design LLC

Red House Design is a multi-disciplinary design, architecture and design/built firm based in Hancock, New York. Current work includes custom-designed homes and commercial buildings, residential interiors modular manufacture renovations, restorations and additions to existing properties with an emphasis on sustainable and energy efficient building material and methodologies

Passion for design, coupled with confidence in and commitment to the modular industry, makes Red House Design uniquely able to think outside the box while working within it.

For more information, please visit our web site at
<http://www.epochhomes.com/contactus/RedHouse.htm>



###

For more information contact:

John D. Ela, CGP
President & CEO
Epoch Corporation
Route 106

P. O. Box 235
Pembroke, NH 03275

JohnEla@EpochHomes.com
www.epochhomes.com