



Epochhomes

fine custom modular homes

PRODUCT MANUAL

SECTION L

FIREPLACES & MISCELLANEOUS CABINETRY

LENNOX[®]
ONE LESS THING TO WORRY ABOUT.[®]



Introduction

Welcome to the Epoch Homes Product Manual. In it you will find many of the products you can select for your custom Epoch Home. Epoch Homes offers the widest selection of product choices for your custom home.

Epoch has always been recognized for the quality of the products we use in construction, as well as the care and detail with which we build every single home, be it a 900 square foot cottage or 15,000 square foot Modular Mansion. Our homes feature such high quality products as Andersen or Pella windows, Moen faucets, and Yorktown cabinets in hickory, maple, or oak. We use all plywood sheathing and subfloors, and foil backed sheetrock for added energy efficiency.

Throughout the Product Manual, product relative value is indicated by a three star system. You might find it helpful to think of the stars as representing an indication of good, better, and best, with 1 star representing good items, 2 stars representing better, and 3 stars representing best. As you probably are aware by now, Epoch Homes are fully custom homes and we want you to be able to select the items and designs that best fit your needs and desires. Simply as a place to start, Epoch includes Prestige products for our standard product selections. These Prestige products are included among the 2 star offerings. With so much selection, it is difficult to generalize, but alternate 2 star selections tend to have a minor price adjustment, 1 star items tend to have a more meaningful downward adjustment, and 3 star items tend to have an upward and sometimes significant upward price adjustment.

When the first modular homes factories started, most products used were inventoried. This system meant there was little flexibility for the customer. They had to choose from one or two colors of carpet and countertops, and only one brand of window, etc. Inventorying items also ties up capital and increases the final cost to consumers. Every house we build now is a custom order. This requires that customers make all their product and color choices no later than 4 weeks prior to production. We discourage changes after this point, because items will not make it on time to be included in the house. Remember, most houses only take five to ten business days to build once they go on line.

In making the selection of products offered here, Epoch has negotiated certain terms and conditions with our suppliers. To capitalize on the efficiencies of a production environment, our suppliers have agreed to inventory many items listed in our Product Manual. We also negotiate better prices whenever possible so we can pass those savings onto our customers. In addition, Epoch makes every effort to accommodate special orders, whenever practical. If a customer wants something not in the Product Manual, it needs to be evaluated to see if:

1. It is an item we feel comfortable in installing (sorry, as custom as we are, we can't put an Italian Marble fountain in the foyer)
2. It is feasible to get the product in a reasonable time before the house is to go on line
3. What are the consequences if it arrives broken (can we get another one in a timely manner? Will it hold up the production line?)
4. It is compatible with our building system (some items such as ductwork just cannot be installed in the factory)

Sometimes, when an item does not meet the above criteria, we will suggest deleting it from the factory order and having the builder install it on site. If it requires certain factory prep items, such as a framed opening or specific electrical circuitry, often Epoch can accommodate those things.

The bottom line is that the more our customers stick with the vast array of products offered in this catalog, the more they benefit from the efficiencies of the systems built home. In any case, Epoch believes that your home is the most important investment of your life, and we will make every effort to build you a home that reflects your lifestyle and budget.



Fireplaces

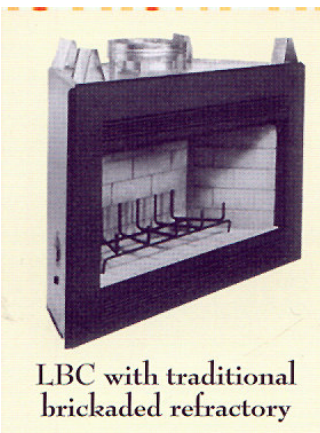
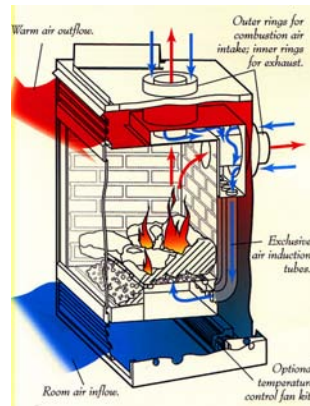


Elite Fireplaces (Gas):

40" Direct Vent Gas (ED4035)

45" Direct Vent Gas (ED4540)

The above have electronic ignition, polished brass trim, doors, & louvers, 30,000+ BTU 's, realistic wood-like fire



Wood Burning Fireplaces

38" Wood burning (LBC3824)

42" Wood burning (LBC4324)

These models have fully insulated firebox, heavy duty grate, heat circulating design

LBC with traditional brickaded refractory

Fireplace mantles are hand-built by Epoch Craftsmen. They are available in the style shown, either oak for staining or poplar for painting. Marble surrounds and hearths come in a variety of choices. Please refer to the current sample board for selections



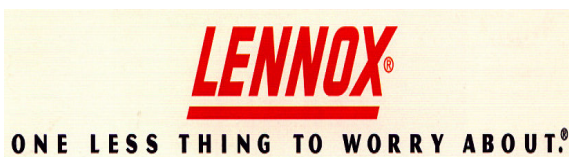
Fireplace with Epoch's white painted mantle



Fireplace with Epoch's natural oak mantle



Fireplace with no mantle
Simple oak trim is provided when no mantle is ordered



Epoch Corp. reserves the right to substitute products of equal or greater value to meet production requirements



Revised 9/1/07

Closet Products



2007 PRODUCT INTRODUCTION

YORKTOWNE
CABINETRY
AN ELKAY COMPANY

A century of craftsmanship. A lifetime of quality.



Taking a century of experience
beyond the kitchen.

At Yorktowne Cabinetry, we pride ourselves on the integrity, craftsmanship and dedication to service we have built since 1908. But having a century of experience does not mean living in the past. We keep a close watch on emerging trends, not only in kitchen designs, but in cabinetry that provides everyday solutions in more beautiful ways throughout the home.

This year we are introducing new and expanded product lines that take our creativity and expertise beyond the kitchen. See what superior design and a heritage of craftsmanship can do for the master closet, bath, library or home office. Discover a modern take on classical designs with our latest door styles and finishes. From architecturally stunning new accessories to a fully integrated online ordering system, Yorktowne continues to develop ways to help you add beauty and value to a home's design.



YORKTOWNE
CABINETRY
AN ELKAY COMPANY

Epochhomes
fine custom modular homes

Epoch Corp. reserves the right to substitute products of equal or greater value to meet production requirements

Revised 9/1/07



THE MASTER CLOSET COLLECTION

Introducing the first closet collection in semi-custom cabinetry made exclusively for the dressing room space. The Yorktowne Master Closet Collection offers a comprehensive line of standard items in all-wood cherry, maple, hickory or oak. Built to our highest construction standards, the closet collection comes with a full lifetime warranty that you won't find anywhere else in the closet industry.



Add interest and elegance with architectural moldings and accents.



Full extension drawers provide complete access to all your belongings.

- Choose from Gold or all-wood Platinum construction.
- Offer value through standard Platinum features such as concealed hinges, wood dovetail drawers and full extension soft-close glides.
- Personalize the space with an expanded line of custom architectural moldings and accents.
- Accessorize and organize with luxury drawer inserts.
- Enjoy flexibility with more SKUs than any other closet line – each designed exclusively for closet applications.
- Choose from the widest selection of finishes, door styles, moldings and accessories.
- All Master Closet Collection cabinetry is included in the Yorktowne 20-20 catalog for seamless integration and ease of design.
- Expand your closet design knowledge with one of the only comprehensive training programs specific to dressing room design.

Serenity Cherry in Sorrel Finish with Ebony Glaze

THE MASTER CLOSET COLLECTION



Drawer Divider



Valet



Extendable Belt Rack



Silver Jewelry Tray



Shelf Divider



Drawer Liner



Tie Rack



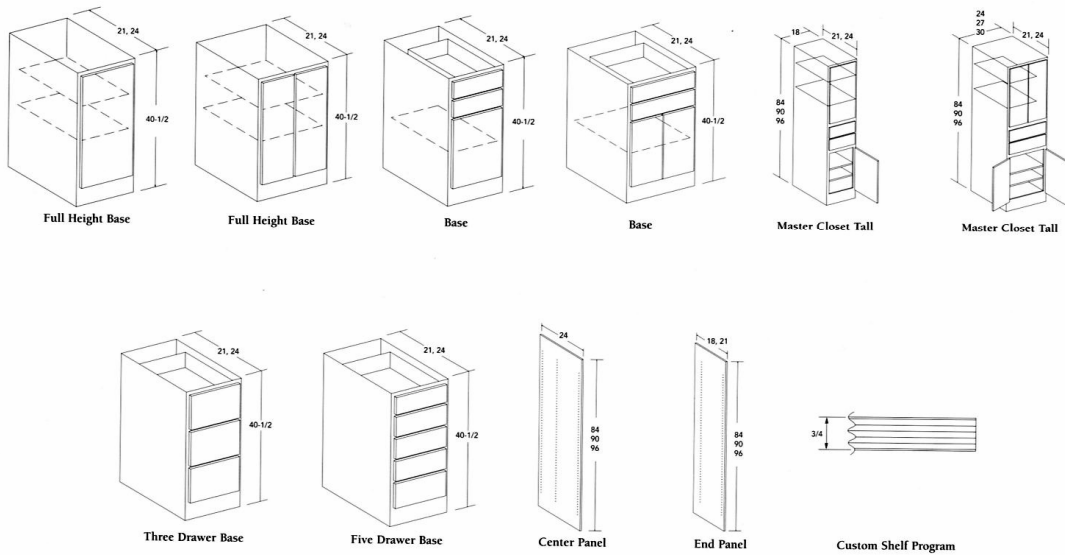
Shoe Shelf

YORKTOWNE™
CABINETRY
AN ELKAY COMPANY

Epochhomes
fine custom modular homes

Epoch Corp. reserves the right to substitute products of equal or greater value to meet production requirements

Revised 9/1/07



YORKTOWNE™
CABINETRY
AN ELKAY COMPANY

Epochhomes
fine custom modular homes

Epoch Corp. reserves the right to substitute products of equal or greater value to meet production requirements

Revised 9/1/07